

Gehry

by Amanda Ruzin
www.amandaruzin.com

This cabled hat was inspired by the BP Pedestrian Bridge, designed by architect Frank Gehry. Located in Chicago's Millennium Park, the pedestrian bridge winds its way across Columbus Drive like a giant metallic snake, combining Gehry's iconic stainless steel geometrics with an organic feel.

Made from aran weight yarn, Gehry knits up quickly, and is a good introduction to cabling.

Size: Adult

Gauge: 3.5 sts/5 rows per inch with larger needles

Materials: 100m/110y of Aran weight yarn, shown in Debbie Bliss Rialto Aran

Needles: 16" US #9/5.5mm circular needles, 16" US #10.5/6.5mm circular needles, 1 set US #10.5/6.5mm double pointed needles

Notions: Tapestry needle, cable needle

Skill Level: Advanced beginner



Brim: Using smaller needles, cast on 64 stitches. Knit a (k1, p1) rib across, place marker and join in the round. Continue in (k1, p1) rib for 7 rounds/1". Switch to larger needles.

Increase Row: *k1, kfb* to end of round. 96 sts on needles.

Body: Work all rounds of chart. The chart is a 16 stitch cable pattern, repeated 6 times each round.

Crown Decreases: Decrease for the crown as follows. When using a circular needle becomes unwieldy, switch to double pointed needles.

Round 1: *k2tog, k3, k2tog, k3, k2tog, k3, p1* to end of round. 78 sts on needles.

Round 2: *k12, p1* to end of round

Round 3: *k2tog, k2, k2tog, k2, k2tog, k2, p1* to end of round. 60 sts on needles.

Round 4: *k9, p1* to end of round

Round 5: *k2tog, k1, k2tog, k1, k2tog, k1, p1* to end of round.

cont. on page 2

Gehry

by Amanda Ruzin

Crown Decreases, cont:

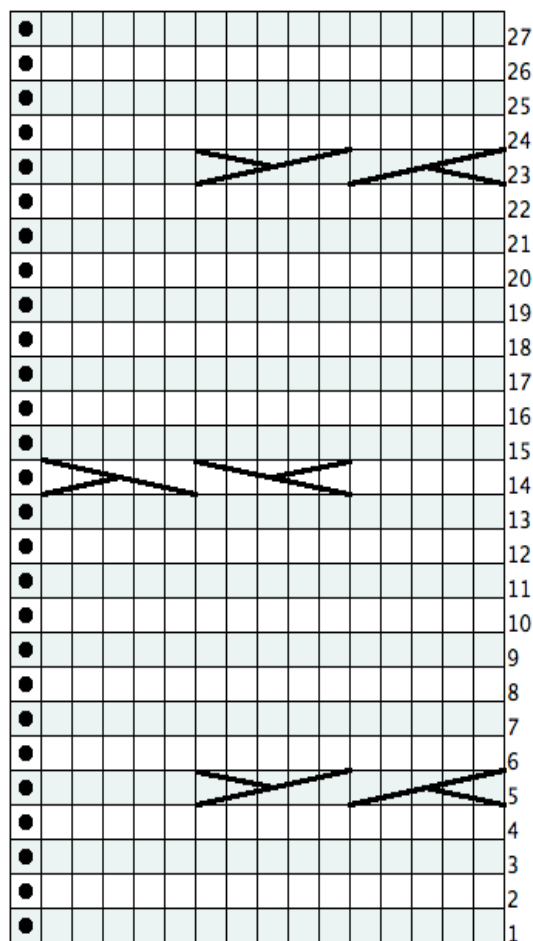
Round 6: *k6, p1* to end of round. 42 sts on needles.

Round 7 *k2tog, k2tog, k2tog, p1* to end of round. 24 sts on needles.

Round 8 *k2tog* to end of round. 12 sts on needles.

Finishing: Break yarn leaving a 8" tail. Using a tapestry needle, pull thread through remaining 12 stitches twice, tighten, and weave in ends. Block if desired.

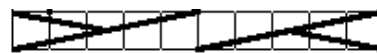
Chart:



□ k1/p1
● p1/k1



Slip 5 to cable needle and hold in front of work, k5, k5 from cable needle.



Slip 5 sts to cable needle and hold in back of work, k5, k5 from cable needle.